

## 大微动开关

- 1.微动开关型号 MICRO SWITCH MODEL: LXW-3-6-1C-AS
- 2.快插端子 QUICK CONNECTOR TYPE;  
单刀双掷 SINGLE POLE DOUBLE THROW
- 3.额定值 RATING: ▲16A 125/250VAC µ 25T125
- 4.接触电阻 CONTACT RESISTANCE: <50mΩ (INITIAL)
- 5.绝缘电阻 INSULATION RESISTANCE: ≥100MΩ(DC500V/1MIN)
- 6.介电强度 DIELECTRIC STRENGTH: 1500V /5mA /1MIN
- 7.机械寿命 MECHANICAL LIFE: >100000 CYCLES
- 8.电气寿命 ELECTRICAL LIFE: >10000 CYCLES
- 9.端子手工焊接条件 SOLDER ABILITY OF TERMINAL: MAX260°C, 3S
- 10.操作力 OPERATION FORCE:150±50gf
- 11.所有部件均使用环保材料 ALL MATERIALS ARE RoHS COMPLIANT

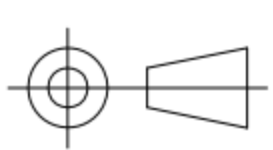


东莞市高迪电子有限公司  
DONG GUAN GAO DI ELECTRONICS CO., LTD

TOLERANCE UNLESS OTHERWISE STATED:

Up to 5 ±0.2  
Above 5 ~ 15 ±0.3  
Above 15 ~ 30 ±0.4  
Above 30 ~ 50 ±0.5  
Angle ±0.3°

3RD. ANGEL'S



UNITS

MM

DRAWN BY: DATE  
Ming Ming Zou 10/31/13  
CHECKED BY: DATE  
Ning Ning Su 10/31/13  
APPROVED BY: DATE  
Jia Xiang 10/31/13

MAT'L	TITLE	SWITCH
FINISH	MODLE	MICRO SWITCH
SCALE	DWG NO.	GD-LXW-3-6-1C-ASR1
SHEET NO.	PART NO.	

SIZE	A4
VER	R

ITEM NO.	DESCRIPTION	DRAWN	DATE
----------	-------------	-------	------